



# Multi- split systems DC Inverter





# Wide range of options

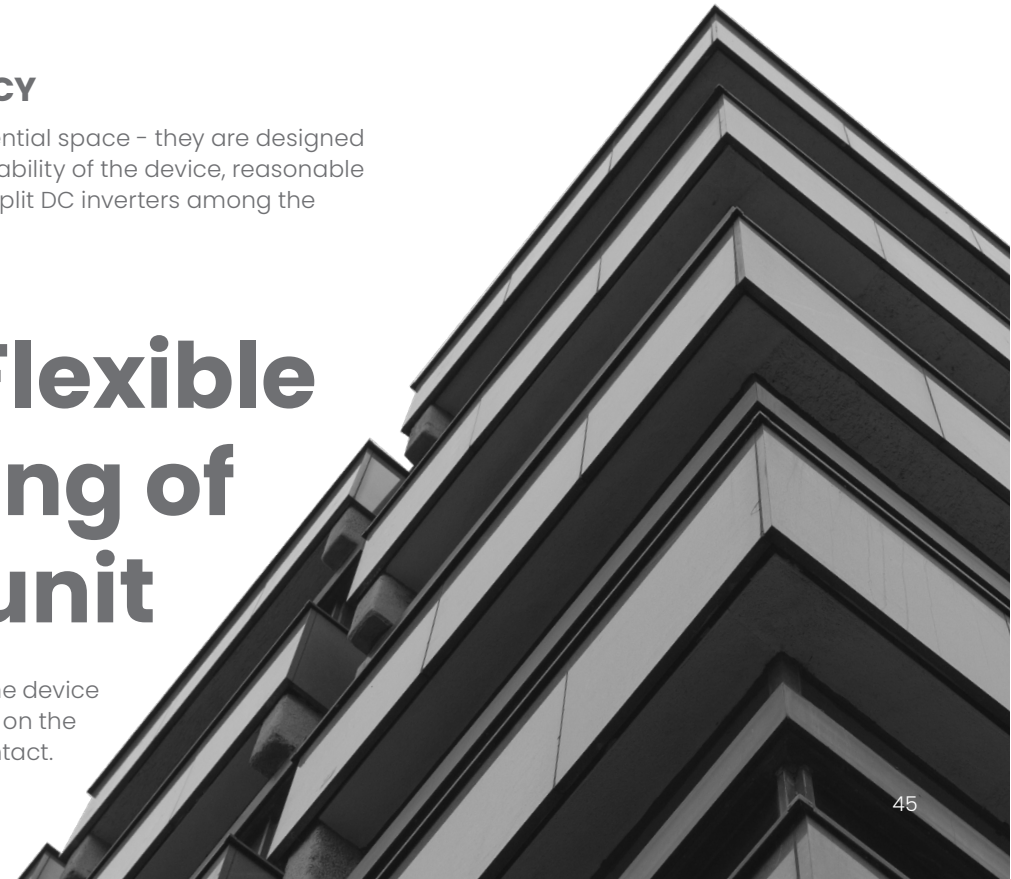
The wide range of outdoor units and the possibility of connecting 2 to 5 indoor units enable the wide application of these air conditioners with special emphasis on commercial and residential spaces. Indoor units come in 5 different versions: wall, cassette, floor, floor-ceiling and duct. It is possible to choose between 21 different indoor units with a capacity range from 2.22 kW to 7.03 kW.

## NEW TECHNOLOGICAL SOLUTIONS OF HIGH ENERGY EFFICIENCY

VIVAX air conditioners are the ideal solution for air conditioning of business or residential space - they are designed to meet the requirements of both the user and the space to be air-conditioned. Durability of the device, reasonable price and A++ class of energy efficiency are the best choice that ranks VIVAX multi split DC inverters among the leading air conditioners in this segment of air conditioning.

# Flexible positioning of the outdoor unit

The maximum length of the installation is 80 m high, which allows very easy positioning of the device in relation to the external dimensions of the building. The outdoor unit can easily be placed on the roof of the building or the courtyard side of the building to keep the outdoor appearance intact.





# Wall indoor units

## AERI | AEMI



Ionizer



Anti-corrosion protection - gold coating



Heating at a temp. of -20°C



3D DC Inverter



Wi-Fi ready



Multi compatibility



Biofilter



Anti-corrosion protection - gold coating



3D DC Inverter



Follow me function



Automatic operating mode



Wi-Fi ready

	Model	ACP-07CH21AEMI/I	ACP-09CH25AERI/I+	ACP-12CH35AERI/I+	ACP-18CH50AERI/I+
Indoor unit	Capacity (W)	2052	2638	3517	5275
	Capacity (W)	2346	2931	3810	5568
	Air flow (m <sup>3</sup> / h) - HI / MID / LOW	520 / 460 / 340	483 / 362 / 303	584 / 477 / 395	730 / 500 / 420
	Refrigerant	R32	R32	R32	R32
	Dehumidifying capacity (L / h)	1.0	1.0	1.2	1.8
	Noise - Sound Pressure (dB (A)) - HI / MID / LOW / SI	40 / 30 / 26 / 21	36.5 / 29 / 24 / 20	39.5 / 33 / 25 / 21	43 / 33.5 / 28 / 23
	Sound power level (dB)	≤ 54	≤ 55	≤ 55	≤ 57
	Packaging dimensions (mm)	870 x 270 x 360	875 x 285 x 380	875 x 285 x 380	1045 x 305 x 410
	Product dimensions (mm)	805 x 194 x 285	802 x 189 x 297	802 x 189 x 297	965 x 215 x 319
	Gross / net weight (kg)	9.5 / 7.5	11.1 / 8.6	11.1 / 8.6	14.2 / 10.9
Connection	Liquid phase pipe diameter	1 / 4"	1 / 4"	1 / 4"	1 / 4"
	Gas phase pipe diameter	3 / 8"	3 / 8"	3 / 8"	1 / 2"
Interconnect cable	Connection (mm <sup>2</sup> )	4 x 1.5	4 x 1.5	4 x 1.5	4 x 1.5
	Power Supply	~220-240 V / 1 / 50 Hz; Outdoor unit			

## Floor indoor units

# CT AERI



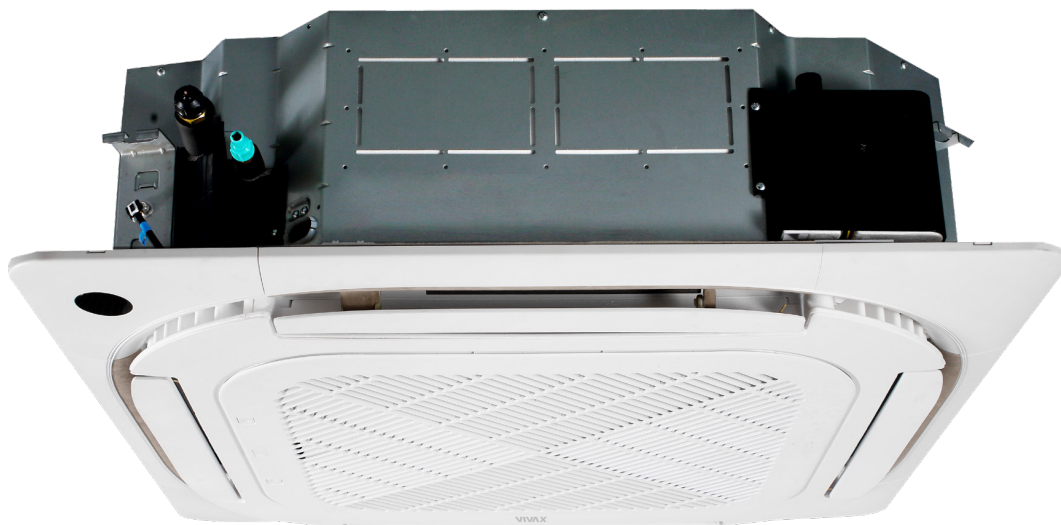
## Floor-ceiling indoor units

# CF AERI








	Model	ACP-09CT25AERI/i3	ACP-12CT35AERI/i3	ACP-18CT50AERI/i3
❄️	Capacity (W)	2638	3517	4982
	Cooling operating range	-15 °C ≤ T ≤ 50 °C	-15 °C ≤ T ≤ 50 °C	-15 °C ≤ T ≤ 50 °C
	<hr/>			
☀️	Capacity (W)	2931	3810	4982
	Heating operating range	-20 °C ≤ T ≤ 24 °C	-20 °C ≤ T ≤ 24 °C	-20 °C ≤ T ≤ 24 °C
Indoor unit	Air flow (m³ / h) - HI / MID / LOW	650 / 580 / 490	650 / 580 / 490	780 / 690 / 600
	Refrigerant	R32	R32	R32
	Dehumidifying capacity (L / h)	1.0	1.2	1.8
	Noise - Sound Pressure (dB (A)) - HI / MID / LOW	37 / 34 / 27	37 / 34 / 27	41 / 38 / 32
	Sound power level (dB)	≤ 54	≤ 54	≤ 55
	Packaging dimensions (mm)	903 x 731 x 295	903 x 731 x 295	903 x 731 x 295
	Product dimensions (mm)	793 x 621 x 200	793 x 621 x 200	793 x 621 x 200
	Gross / net weight (kg)	18.8 / 14.9	18.8 / 14.9	18.8 / 14.9
Connections	Liquid phase pipe diameter	1 / 4"	1 / 4"	1 / 4"
	Gas phase pipe diameter	3 / 8"	3 / 8"	1 / 2"
Interconnect cable	Connection (mm²)	4 x 1.5	4 x 1.5	4 x 1.5
	Power Supply	~220-240 V / 1 / 50 Hz; Outdoor unit		

	Model	ACP-18CF50AERI/i3
❄️	Capacity (W)	5280
	Cooling operating range	-15 °C ≤ T ≤ 50 °C
☀️	Capacity (W)	5570
	Heating operating range	-20 °C ≤ T ≤ 24 °C
Indoor unit	Air flow (m³ / h) - HI / MID / LOW	958 / 839 / 723
	Refrigerant	R32
	Dehumidifying capacity (L / h)	1.8
	Noise - Sound Pressure (dB (A)) - HI / MID / LOW / SI	43.5 / 41 / 36.5 / 24
	Sound power level (dB)	≤ 57
	Packaging dimensions (mm)	1145 x 755 x 318
	Product dimensions (mm)	1068 x 675 x 235
	Gross / net weight (kg)	33.3 / 28
Connections	Liquid phase pipe diameter	1 / 4"
	Gas phase pipe diameter	1 / 2"
Interconnect cable	Connection (mm²)	4 x 1.5
	Power Supply	~220-240 V / 1 / 50 Hz; Outdoor unit



# Cassette indoor units

## CC AERI

-  R32 gas
-  Night mode
-  1.0 W Standby
-  Dust filter
-  Self-cleaning
-  3D DC inverter
-  Error detection and display
-  Heating at a temp. of -20 °C
-  Cooling at a temp. of -15 °C
-  Follow me function
-  Last mode memory
-  Timer
-  Louver Position Memory
-  Condensate drain pump
-  Wired control device
-  360° air flow



### Model

**ACP-09CC25AERI/i2    ACP-12CC35AERI/i3s    ACP-18CC50AERI/i3s**

❄️	Capacity (W)	2638	3517	5280
	Cooling operating range	-15 °C ≤ T ≤ 50 °C	-15 °C ≤ T ≤ 50 °C	-15 °C ≤ T ≤ 50 °C
☀️	Capacity (W)	2931	3810	6568
	Heating operating range	-20 °C ≤ T ≤ 24 °C	-20 °C ≤ T ≤ 24 °C	-20 °C ≤ T ≤ 24 °C
Indoor unit	Air flow (m³ / h) -HI / MID / LOW	580 / 500 / 450	620 / 520 / 330	660 / 540 / 300
	Refrigerant	R32	R32	R32
	Dehumidifying capacity (L / h)	1.0	1.2	1.8
	Noise - Sound Pressure (dB (A)) -HI / MID / LOW	38 / 33 / 29	42 / 38.5 / 31.5	44 / 41 / 31.5
	Sound power level (dB)	≤ 53	≤ 55	≤ 56
	Product packaging dimensions (mm)	675 x 640 x 295	715 x 640 x 295	715 x 640 x 295
	Panel packaging dimensions (mm)	715 x 715 x 125	715 x 700 x 115	715 x 700 x 115
	Product dimensions (mm)	570 x 570 x 260	570 x 570 x 245	570 x 570 x 245
	Panel dimension (mm)	620 x 620 x 50	620 x 620 x 50	620 x 620 x 50
	Gross / net panel weight (kg)	4.5 / 2.5	4.3 / 2.7	4.3 / 2.7
	Gross / net product weight (kg)	19.2 / 14.5	18.8 / 16.1	19 / 16.2
Connections	Liquid phase pipe diameter	1 / 4"	1 / 4"	1 / 4"
	Gas phase pipe diameter	3 / 8"	3 / 8"	1 / 2"
Interconnect cable	Connection (mm²)	4 x 1.5	4 x 1.5	4 x 1.5
	Power Supply	~220-240 V / 1 / 50 Hz; Outdoor unit		



## Duct indoor units

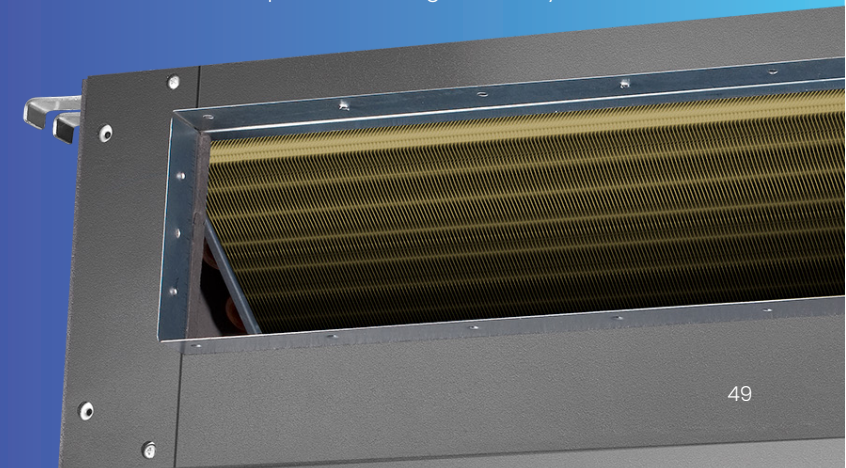
# DT AERI



	Model	ACP-12DT35AERI/I3s	ACP-18DT50AERI/I3s
❄️	Capacity (W)	3517	5280
	Cooling operating range	-15 °C ≤ T ≤ 50 °C	-15 °C ≤ T ≤ 50 °C
☀️	Capacity (W)	3810	5568
	Heating operating range	-20 °C ≤ T ≤ 24 °C	-20 °C ≤ T ≤ 24 °C
Indoor unit	Air flow (m³ / h) -HI / MID / LOW	600 / 570 / 470	900 / 780 / 650
	Refrigerant	R32	R32
	Dehumidifying capacity (L / h)	1.2	1.8
	Noise - Sound Pressure (dB (A)) -HI / MID / LOW	35 / 33 / 31	36.5 / 34 / 31
	Sound power level (dB)	≤ 52	≤ 53
	Packaging dimensions (mm)	860 x 540 x 285	925 x 850 x 298
	Product dimensions (mm)	700 x 506 x 200	700 x 750 x 245
	Gross / net weight (kg)	19.8 / 16.6	29 / 24.4
Connections	Liquid phase pipe diameter	1 / 4"	1 / 4"
	Gas phase pipe diameter	3 / 8"	1 / 2"
Interconnect cable	Connection (mm²)	4 x 1.5	4 x 1.5
	Power Supply	~220-240 V / 1 / 50 Hz; Outdoor unit	

### PRIMEGUARD COATING FOR LONG-LASTING PERFORMANCE

The unique anti-corrosion gold coating on the heat exchanger can withstand salt air, rain and other corrosive elements. It also effectively prevents the growth of bacteria and improves heating efficiency.



Outdoor units

# COFM AERI

A++ Cooling SEER 6.9  
A+ Heating SCOP 4.0



R32 gas



3D DC Inverter



Heating at a temp. of -20°C



Cooling at a temp. of -15°C



The protective cover of the valve



Error detection and display



Chasis heating belt



Compressor heating belt



Last mode memory



## Flexible installation

The maximum length of the cooling pipes can be up to 80 m. The maximum difference in height between the indoor and outdoor unit can be up to 30 m.

	Model	ACP-14COFM40AERis R32	ACP-18COFM50AERis R32	ACP-21COFM60AERis R32	ACP-27COFM79AERis R32	ACP-28COFM82AERI R32	ACP-36COFM105AERI R32	ACP-42COFM123AERis R32
Cooling	Capacity (W)	4103 (1611-4982)	5275 (2286-5715)	6155 (2491-7034)	7913 (3077-8909)	8206 (3077-11137)	10550 (3077-11195)	12104 (3165-13598)
	Energy efficiency class	A++	A++	A++	A++	A++	A++	A++
	Energy Efficiency SEER	6.9	6.9	6.9	6.7	6.9	6.7	6.9
	Cooling operating range	-15 °C ≤ T ≤ 50 °C	-15 °C ≤ T ≤ 50 °C	-15 °C ≤ T ≤ 50 °C	-15 °C ≤ T ≤ 50 °C	-15 °C ≤ T ≤ 50 °C	-15 °C ≤ T ≤ 50 °C	-15 °C ≤ T ≤ 50 °C
	Estimated load on cooling (W)	4100	5300	6100	7900	8200	10500	12100
	Power input (W)	1270 (100-1670)	1635 (160-2000)	1900 (180-2200)	2450 (210-2960)	2540 (210-3450)	3233 (230-4285)	3747 (230-4650)
Heating	Capacity (W)	4396 (1612-4982)	5570 (2403-5744)	6154 (1614-6593)	8206 (2110-8471)	8206 (2345-8528)	10550 (3278-11943)	12103 (3370-12011)
	Energy efficiency class	A+	A+	A+	A+	A+	A+	A+
	Energy Efficiency SCOP	4.0	4.0	4.0	4.0	4.0	4.0	4.0
	Heating operating range	-20 °C ≤ T ≤ 24 °C	-20 °C ≤ T ≤ 24 °C	-20 °C ≤ T ≤ 24 °C	-20 °C ≤ T ≤ 24 °C	-20 °C ≤ T ≤ 24 °C	-20 °C ≤ T ≤ 24 °C	-20 °C ≤ T ≤ 24 °C
	Estimated load on heating	3.8	4.5	5.1	5.7	5.9	8.2	9.3
	Power input (W)	1185 (240-1525)	1500 (270-1750)	1660 (250-1750)	2210 (410-2330)	2210 (450-2708)	2880 (603-4483)	3433 (550-3850)
Outdoor unit	Refrigerant	R32	R32	R32	R32	R32	R32	R32
	Maximum number of indoor units	2	2	3	3	4	4	5
	Noise - Sound Pressure (dB (A))	≤ 54	≤ 54	≤ 56	≤ 56	≤ 58	≤ 59	≤ 60
	Sound power level (dB)	≤ 64	≤ 65	≤ 70	≤ 70	≤ 70	≤ 70	≤ 70
	Bracket distance (mm)	514	514	663	663	673	673	673
	Packaging dimensions (mm)	915 x 370 x 615	915 x 370 x 615	1030 x 438 x 750	1030 x 438 x 750	1090 x 500 x 885	1090 x 500 x 885	1090 x 500 x 885
	Product dimensions (mm)	805 x 330 x 554	805 x 330 x 554	890 x 342 x 673	890 x 342 x 673	946 x 410 x 810	946 x 410 x 810	946 x 410 x 810
Gross / net weight (kg)	34.7 / 31.6	38 / 35	47.1 / 43.3	51.8 / 48	67.7 / 62.1	75.6 / 68.8	79.5 / 74.1	
Connections	Liquid phase pipe diameter	1 / 4"	1 / 4"	1 / 4"	1 / 4"	1 / 4"	4" x 1 / 4"	5" x 1 / 4"
	Gas phase pipe diameter	3 / 8"	3 / 8"	3 / 8"	3 / 8"	3 x 3 / 8" + 1 x 1 / 2"	3 x 3 / 8" + 1 x 1 / 2"	4 x 3 / 8" + 1 x 1 / 2"
	Maximum pipe length (m)	40	40	60	60	80	80	80
	Maximum height difference (m) (OU above IU / OU below IU)	15 / 10	15 / 10	15 / 10	15 / 10	15 / 10	15 / 10	15 / 10
	Pre-filled pipe length (m)	15	15	22.5	22.5	30	30	37.5
	Gas refill (For Liquid phase pipe diameter 1/4")	12 g / m	12 g / m	12 g / m	12 g / m	12 g / m	12 g / m	12 g / m
Interconnect cable	Connection (mm <sup>2</sup> )	3 x 2.5	3 x 2.5	3 x 2.5	3 x 2.5	3 x 2.5	3 x 2.5	3 x 4.0
	Power Supply	~220-240 V / 1 / 50 Hz; Outdoor unit						







# Overview of outdoor units

**720 x 270 x 495 mm**  
Bracket distance 452 mm



Name of outdoor unit	Compatible indoor units
ACP-09CH25AEMI/O3	ACP-09CH25AEMI/I3
ACP-09CH25AEQI/O3	ACP-09CH25AEQI/I3
ACP-12CH35AEMI/O3	ACP-12CH35AEMI/I3
ACP-12CH35AEQI/O3	ACP-12CH35AEQI/I3
ACP-12CH35AEXI/O3	ACP-12CH35AEXI/I3
ACP-12CH35AEMI/O	ACP-12CH35AEMI/I
ACP-12CH35AENI/O	ACP-12CH35AENI/I

**765 x 303 x 555 mm**  
Bracket distance 452 mm



Name of outdoor unit	Compatible indoor units
ACP-09CH25AERI/O+	ACP-09CH25AERI/I+
ACP-09CH25AERI/O+	ACP-09CH25AERI/I+ GOLD
ACP-09CH25AERI/O+	ACP-09CH25AERI/I+ SILVER
	ACP-12CH35AEMI/I+
ACP-12CH35AEMI/O+	ACP-12CH35AEMI/I+ GOLD
	ACP-12CH35AEMI/I+ SILVER
ACP-12CH35AERI/O+	ACP-12CH35AERI/I+
	ACP-12CH35AERI/I+ GOLD
	ACP-12CH35AERI/I+ SILVER
ACP-12CH35AERI/O+	ACP-12CH35AERI/I+ RED
	ACP-12CH35AERI/I+ SILVER MIRROR
	ACP-12CC35AERI/I3s
ACP-12LCAC35AERI/Os	ACP-12CT35AERI/I3
	ACP-12DT35AERI/I3s

**805 x 330 x 554 mm**  
Bracket distance 511 mm



Name of outdoor unit	Compatible indoor units
ACP-12CH35AEYI/Os	ACP-12CH35AEYI/Is
ACP-18CH50AERI/O+	ACP-18CH50AERI/I+ SILVER MIRROR
	ACP-18CH50AERI/I+
ACP-18CH50AEMI/O2s	ACP-18CH50AEMI/I2s
ACP-18CH50AEQI/O2s	ACP-18CH50AEQI/I2s
	ACP-18CC50AERI/I3s
ACP-18LCAC50AERI/Os	ACP-18CT50AERI/I3
	ACP-18CF50AERI/I3
	ACP-18DT50AERI/I3s
ACP-18CH50AENI/O	ACP-18CH50AENI/I
	ACP-18CH50AEMI/I+
	ACP-18CH50AEMI/I+ SILVER
ACP-18CH50AEMI/O+	ACP-18CH50AEMI/I+ GOLD
	ACP-18CH50AEMI/I+ GRAY MIRROR

**890 x 342 x 673 mm**

Bracket distance 663 mm



Name of outdoor unit	Compatible indoor units
ACP-24CH70AEMI/O2s	ACP-24CH70AEMI/I2s
ACP-24CH70AEQI/O2s	ACP-24CH70AEQI/I2s
ACP-24LCAC70AERI/Os	ACP-24CC70AERI/I3
	ACP-24CF70AERI/I3
ACP-24FS70AERI/O3	ACP-24FS70AERI/I3
ACP-24DT70AERI/O3	ACP-24DT70AERI/I3s

**946 x 410 x 810 mm**

Bracket distance 673 mm



Name of outdoor unit	Compatible indoor units
ACP-36LCAC105AERI/Os	ACP-36DT105AERI/I3s
	ACP-36CC105AERI/I3
	ACP-36CF105AERI/I3

**952 x 415 x 1333 mm**

Bracket distance 634 mm



Name of outdoor unit	Compatible indoor units
ACP-48FS140AERI/O2	ACP-48FS140AERI/I2
	ACP-48CC140AERI/I3
ACP-48LCAC140AERI/O2s	ACP-48CF140AERI/I3
	ACP-48DT140AERI/I3s
	ACP-55CC160AERI/I3
ACP-55LCAC160AERI/O2s	ACP-55CF160AERI/I3
	ACP-55DT160AERI/I3s
ACP-55FS160AERI/O3	ACP-55FS160AERI/I3

### Motherboard cooling on the outdoor unit

The newly designed cooling circuits use improved airing technology – both for efficient cooling and for heat exchangers and electronic boxes, which significantly improves the performance of the unit at high ambient temperatures. It is 5 times more efficient in heat transfer compared to conventional technology.